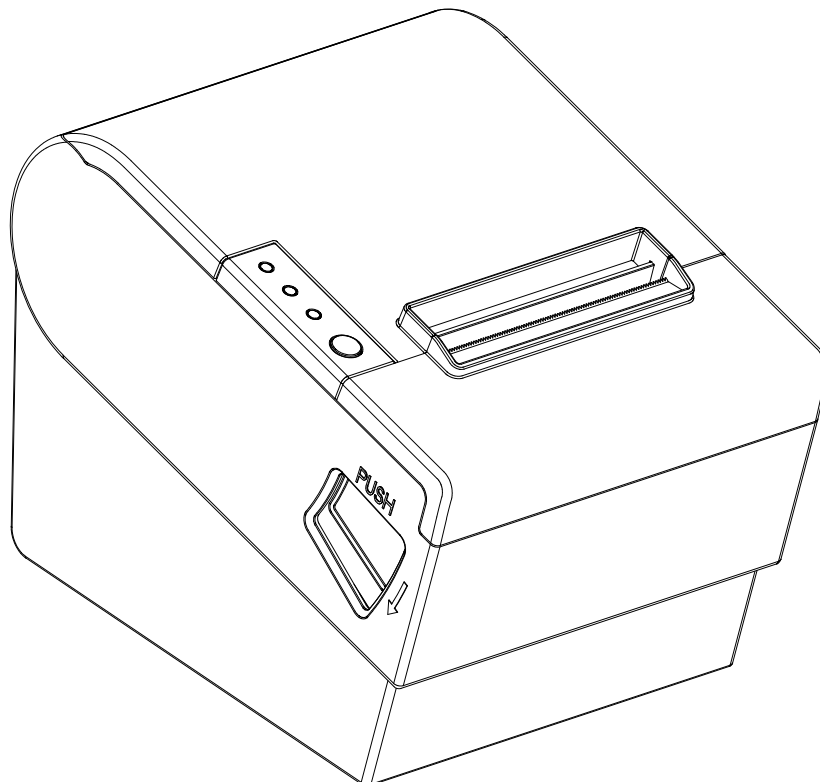


Thermal Receipt Printer

Operation Manual



Notice

We will keep improving and updating all the functions and performances. Please noted that the documentation will be subject to change in the future without notice.

We will welcome and appreciate your comments or suggestions about our manual if you find any wrong or mistake in it. Please don't copy or reprint the document without permission.

Thanks for choosing our thermal paper printer. This manual can help you understand the printer .Please keep this manual for your reference.

Notice

- Don' t touch the head of printer with anything;
- Don' t touch the cutter blade;
- Don' t bend the power cord excessively or place any heavy objects onto it;
- Don' t use the printer when it is out of order. This can cause a fire or and electrocution;
- Don' t use the power cord excessively or place any heavy objects onto it;
- When connecting or disconnecting the plug, always hold the plug-not the cord;
- Only approved accessories can be used and do not try to disassemble, repair or remodel it by yourself;
- To ensure the printing quality;
- Please make sure the power turned off while pulling out plug cable.

Application area

- * POS system Receipts * EFT POS system Receipts
- * Gym, Post, hospital, civil aviation system Receipts * Tax, Tab Receipts
- * Inquiry, Service system Receipts * Instrument test Receipts

Packing

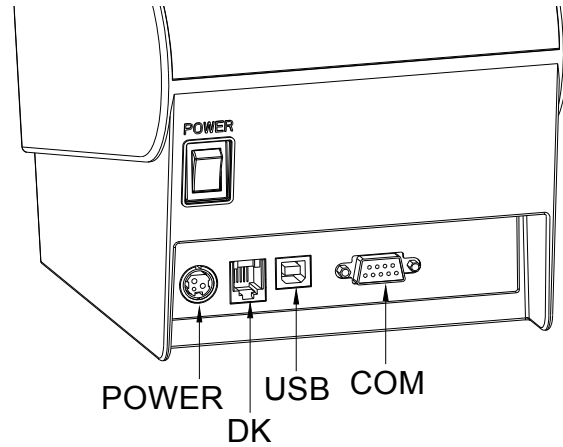
Manual, printer, usb cable, power adapter, paper roll, warranty card, CD

Notices: Not each packing owns all the accessories, it depends on different type (interface) and different customer needs.

Parameters

Printing	
Print method	Thermal dot line printing
Print width(mm)	80±0.2
No. of dots/line	576
Print speed	Max 250mm/sec
Interfaces	USB, Serial
paper	79.5±0.5(W) x dia. 83.0
Line spacing	3.75mm (Adjust the line spacing with commands)
column	Font A-42line 48line/Font B-56line or 64line/simple-traditional-21 lines or 24 lines
character	Standard GB18030 Simplified Chinese
Bar code character	
character table	PC437/Katakana/PC850/PC860/PC863/PC865/Greek/Hebrew/PC857(Turkish)/PC737(Greek)/(WPC1252)/(PC866)/(PC864)(Latin2)/(PC868)/WPC775(Baltic Rim)/PC855(Cyrillic)/PC864(Arabic)/WPC1251(Cyrillic)/WPC1254(Turkish)/WPC1255(Hebrew)/WPC1256(Arabic)/WPC1257(Baltic Rim)
Bar code type	UPC-A/UPC-E/JAN13(EAN13)/JAN8(EAN8)CODE39/ITF/CODABAR/CODE93/CODE128
QR code	QRCODE
Buffer	
Data Buffer	10K bytes
NV Flash	256K bytes
Power	
Cashbox output	DC 24V/1A
Power adapter	input: AC100V/240V, 50~60Hz, output: DC 24V/2A
Power	Input: AC 110V/220V, 50 ~ 60Hz
Dimensions	
WxDxH (mm)	145×192×145
Environment	
Operation Temperature	T: 0 ~ 45℃, H: 10 ~ 80%
storage Temperature	T: -10 ~ 50℃, H: 10 ~ 90% (No condensation)
Lifetime	
reliability	Abrasion Life 100KM, cutter 1 million

Connect the cable line to the printer.



Put the paper roll

1. Open the printer cover, Put the paper roll to the place,
2. Take out some paper outside the printer and then close the printer cover,
3. Cut the spare paper by the cutter.

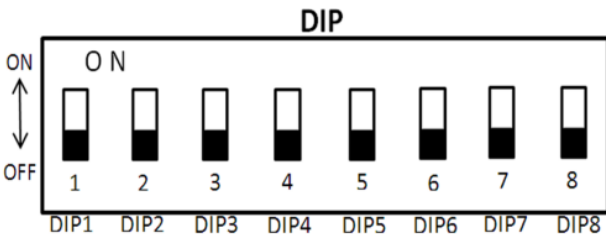
Place the printer

1. On the desktop, 2. Use the bottom two holes to hang on the wall.

Cutter is locked

1. Open the front cover, 2. Adjust the gear if the cutter is locked.

Sets the print mode (DIP switch)



Set print mode by the DIP Switch ,
Configure the 8 port to be configured.

Dip	Function
1	Serial baud rate setting
2	
3	Print Density Settings
4	
5	Cutter switch
6	Alarm switch
7	-
8	Menu/DIP selection

Special Note: Power on the parameters set by DIP must restart the printer to take effect parameters. In the menu mode you can query all the parameters of the DIP setting.

DIP setting method

1. Serial baud rate setting.

DIP		parameter
1	2	
OFF	OFF	115200 bps
ON	OFF	57600 bps
OFF	ON	19200 bps
ON	ON	9600 bps

Description: Sets the baud rate of the serial port using the combination of DIP1 and DIP2 status. For example, when DIP1 is selected as ON and DIP2 is selected as OFF, the baud rate is set at 57600 bps.

2. Print Density Settings

DIP		parameter
3	4	
OFF	OFF	Medium solubility
ON	OFF	-
OFF	ON	high concentration
ON	ON	Low concentration

Description: Sets the print density using the combination of DIP3 and DIP4 status.

3. Cutter settings

DIP	parameter
5	
ON	Turn the cutter
OFF	Turn the cutter

Note: The cutter function is set with DIP5 status, and the cutter action will not be executed after the cutter command is turned off.

4. Alarm settings

DIP	parameter
6	
ON	Close the alarm
OFF	open the alarm

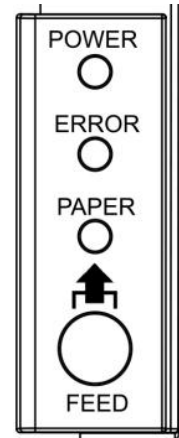
Note: Set the alarm function with the status of DIP6. If the alarm function is similar to the error and paper out after closing, the alarm will not be given and the button will still exist.

5. Factory settings

Initial situation, the default is DIP1 ~ DIP8 all in the OFF position. SW-8 is OFF state, DIP setting parameter mode is invalid, adjust DIP dial value, cannot change the parameter value, at this time, only through the menu mode for function and parameter adjustment.

Key & indicator light

1. (POWER) The light shows the printer power on.
2. (ERROR) The error light flashing once out of paper, cutter error or the printer head is overheat.
3. (PAPER) Both the light and Error bright means out of paper and if both unlighted means paper in.
4. (FEED) Click this button to send paper, if continue to press this key will continuous paper feed.



Key Menu

Notes: ●: Long press key ◎: short press key (Press and release immediately)

Status	MODE	Function	Note
Power on	●	IAP mode	Press and hold the paper button, and then turn on the power, immediately release the button, see all the light is lit to enter the IAP upgrade mode.
	●	Print a self-test page	Press and hold the paper button, then turn on the power, hold the button pressed until you hear a buzzer beep or the paper out light flashes once, release the button to start printing the self-test page.
	●	Enter the menu setting mode	Press and hold the paper button, and then turn on the power, keep the button pressed until you hear the buzzer two consecutive tweets or out of paper light flashes twice, release the button to enter the menu settings mode.
	●	Enter the hexadecimal print mode	Press and hold the paper button, and then turn on the power, keep the button pressed until you hear the buzzer three consecutive tweets or out of paper light flashes three times, release the button to enter the hexadecimal print mode.
Online	◎	Paper feed 1 line	Short press the key to feed the paper 1 line (about 3.75mm).
	●	Continuous feed	Long press the button for more than 1 second, continuous feeding paper, until the button release
Menu mode	◎	Polling the menu item	Short press the key, according to the increase in the number of keys and polling the corresponding point to the corresponding menu item.

	•	Executes the current menu item	Executes the selected current menu item (It also saves the selected parameter values).
--	---	--------------------------------	--

QR code

1.33 GSI v r nL nH d1...dk QRcode

Format	ASCII	GS	1	v	r	nL	nH	d1	...	dk	
	Hexadecimal	1D	6C	v	r	nL	nH	d1	...	dk	
	Decimal	29	108	v	r	nL	nH	d1	...	dk	
Range	1≤v≤20, 0≤v≤3, 0≤nL≤255, 0≤nH≤255, k=nL+nH*255										
Description	<p>Print QR code</p> <ul style="list-style-type: none"> • V is the DQCODE version number • r=0, Error correction level is L r=1, Error correction level is M r=2, Error correction level is Q r=3, Error correction level is H • nL, nH is the low position and the high position of the integer K, K is the data length of the printed bar code, The unit is byte, The printer will put the k characters(d1...dk) after nH as the bar code data. 										
Notes	<ul style="list-style-type: none"> • Due to the limited print width, QRCODE has a version number of max 20. • For more information about the encoding standard for QRCODE, see the Chinese National Standard GB/T 18284-2000 or ISO/IEC 18004:2000. • The printer can support digital, character, Chinese characters and 8-bit data encoding mode, the user does not need to specify, the printer can automatically match the most appropriate encoding mode. • The printer automatically matches the optimum mask mode without specifying a mask. • Each version corresponds to a different encoding, error correction level can accommodate the effective data length, for details please refer to international documents, the excess will be ignored. • If v, r exceeds the specified range, the data will be processed as normal data. • Character enlargement, bold, double print, rotate, underline, etc. Print mode is invalid for the change command. • Alignment, etc. position processing command is still valid. • The command is executed, the two-dimensional code directly print the picture, without the need for carriage return in the annex or paper order. 										

	• After printing the bar code, set the print position at the beginning of the line.
--	---

Examples:

Version	Error correction level	data length<8 bits	data length<8 bits	data
06	00	04	00	4F 50 4F
1~20	0~3	The data length is 0x0004		The actual characters

Printer Cleaning

When one of the following conditions occurs, clean the thermal head.

- 1.The print content is not clear,
2. The noise becomes loud.

Cleaning steps:

1. Turn off the printer power, open the upper cover, take out the paper,
2. With a soft cotton dipped in absolute ethanol (should be wring dry) to remove the print head thermal film surface dust,
3. Wait for ethanol completely evaporated, close the cover.

*** If you have just finished printing, wait for the print head to cool completely.***

Security features Check the print head for overheating

◆once the print head is overheating, automatic stop printing thermal protection status, prevent damage of the print head, when the temperature after recovery can continue to print

Paper cover abnormal operation protection

◆In printing, once opening paper cover, the print head and paper feed motor will immediately stop working and hanging the current print job. It can reprint when the paper cover closing.

Abnormal cutter reminders

◆When there is a failure of the blade and goes through the error indicator lights flashing and alarm to remind the user.

Cutter self -recovery

◆When the cutting action is not in place or when the phenomenon of out of step , will automatically reset the cutter and try to carry out a cutter action to ensure reliable cutting.

Printer driver

There are two printer drivers, WINDOWS is directly under the driver installation, the

other is the use of port direct drive.

(1) Install the drive under the WINDOWS

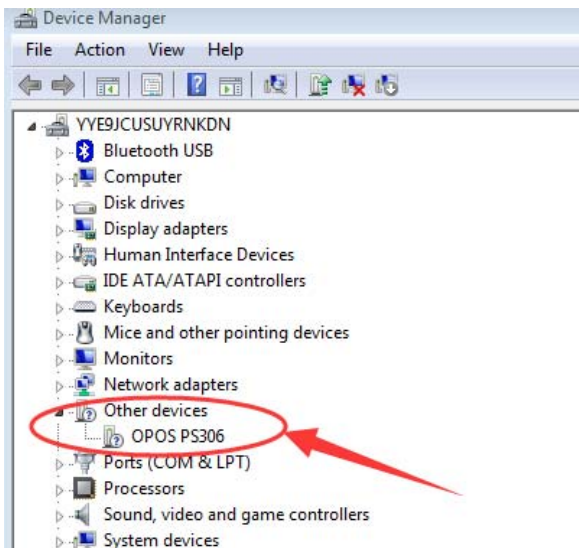
Add a printer in WINDOWS, and develop driver files in the drive to WINDOWS, only need to call the driver in the program can start printing. In this way, in fact, by the printer program WINDOWS characters into graphics dot matrix way to print.

(2) Direct drive at the port

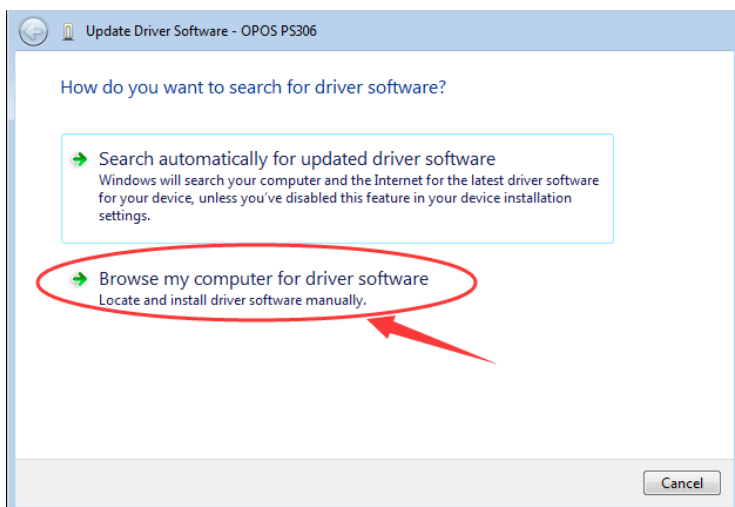
In this way, do not need to use the driver, only the characters directly to the port, and by the printer's internal hard font to achieve the character conversion printing, Using the direct port drive mode, the print control will be more convenient.

If you use the port direct drive, you need to use the print command set to control the printer's printing, and 80mm printer has been integrated within the ESC / POS command set.

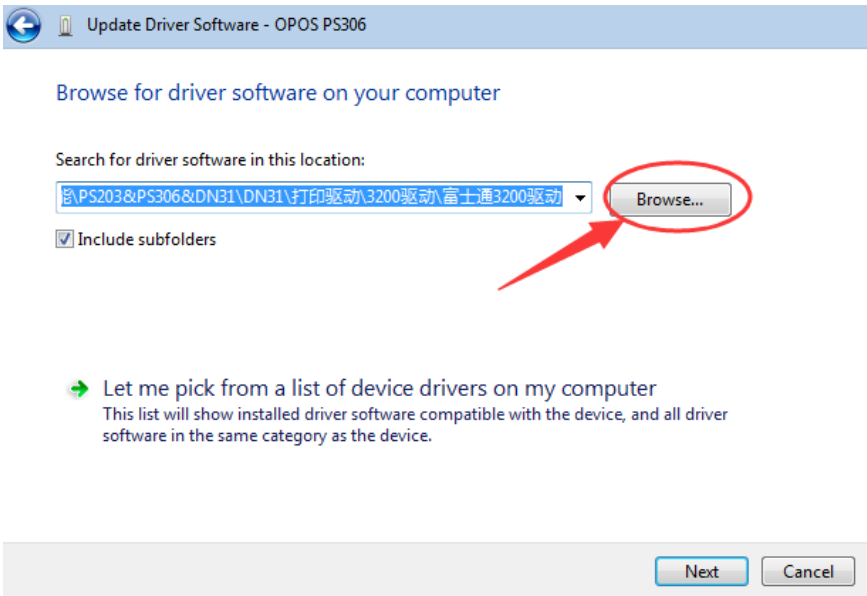
Windows driver installation diagram



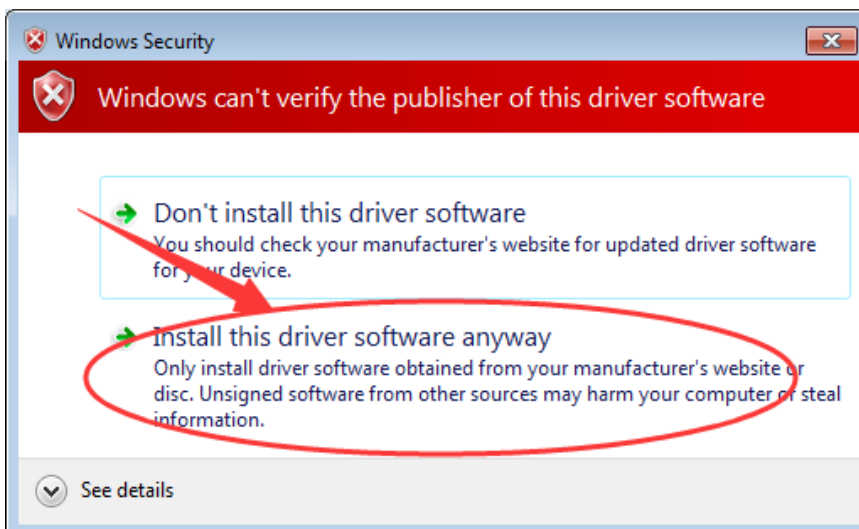
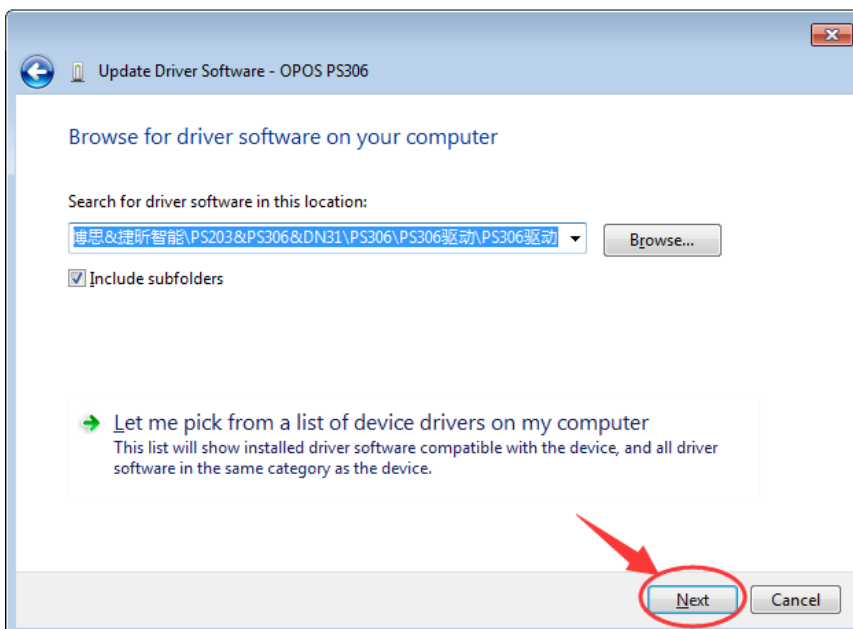
1. Open device manager, click on other devices, select OPOS PS306.



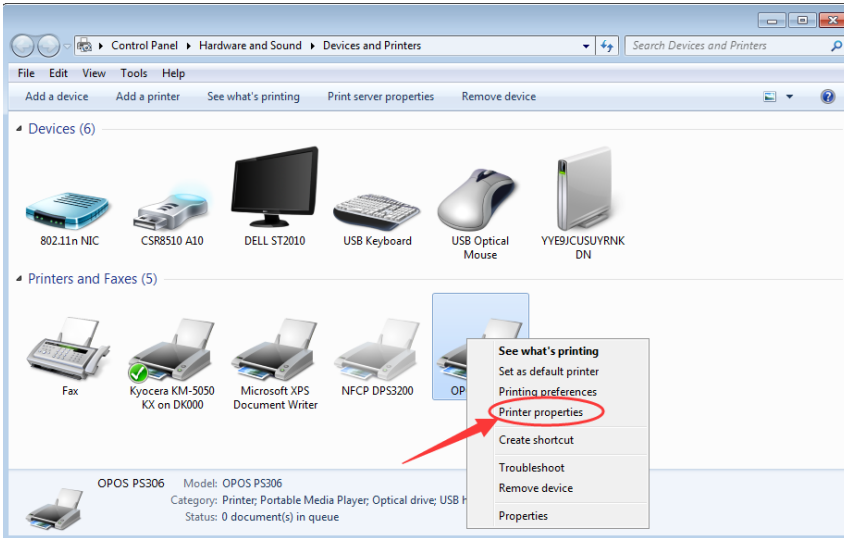
2. Browse the computer to find the driver software.



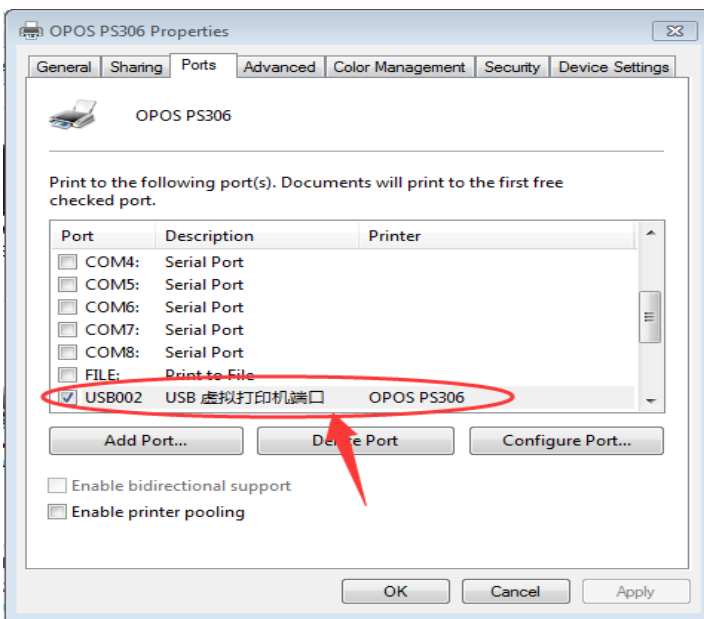
3. Select the driver to store the path and click next.



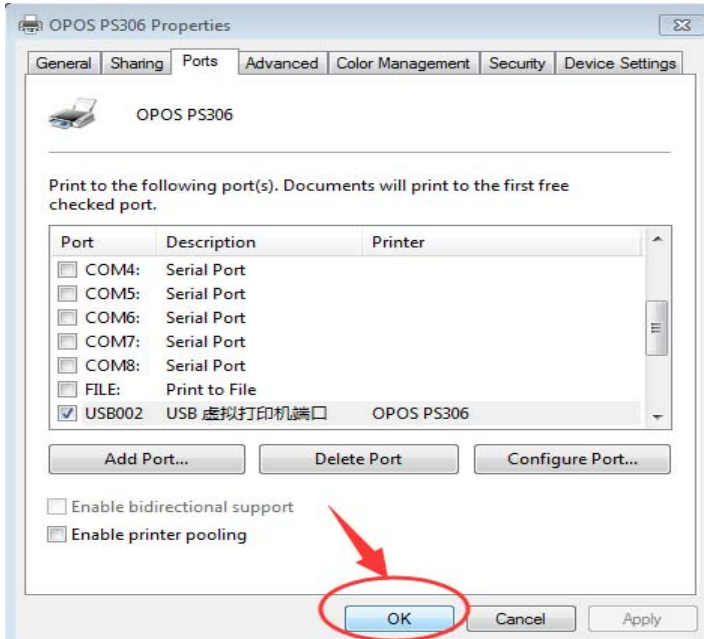
4. Select always install, as shown.

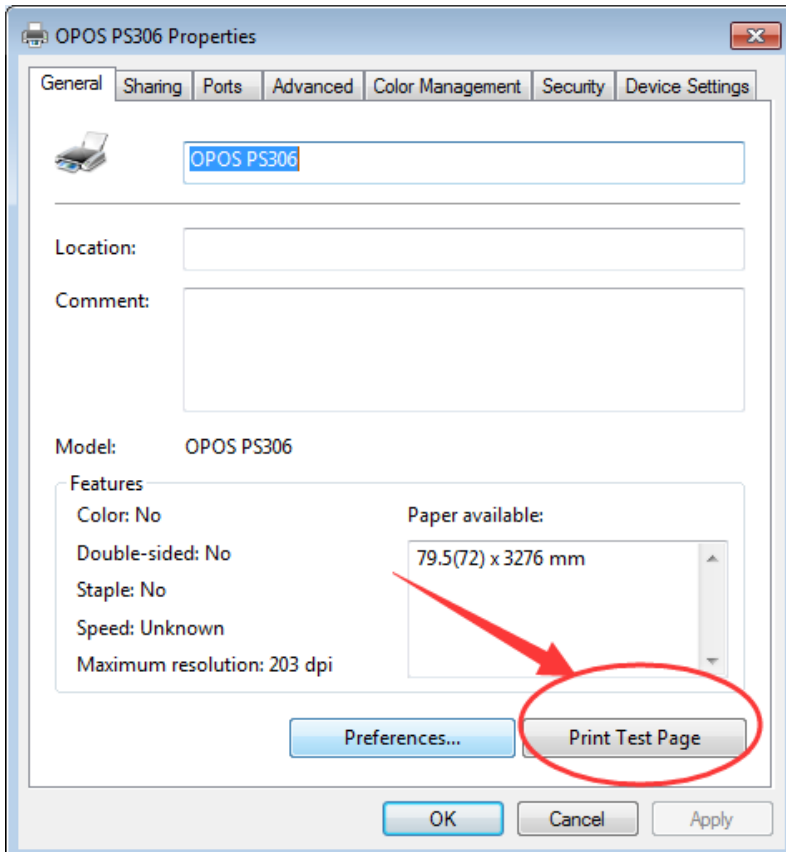


5. Install success, go to devices and printers interface select OPOS PS306, right click printer property for port configuration.



6. Select USB002, click apply, as shown.





7. Select the routine, and click the Print Test Page. If you have a print testing page, the driver has been installed successfully.